

\$799,000

mikegreerhomes

Redwood

Lot 14 Te Whata Tuarima



for sale

dwelling size | section size
137 m² | 321 m²

homes
for
sale

Set on a fully landscaped section, this well-appointed home offers three double bedrooms, a family bathroom, and an ensuite. The open plan kitchen, dining, and living area forms the heart of the home, with seamless indoor/outdoor flow to the easy-care section. Complete with an internal access single garage and quality fixtures and fittings throughout, this home is designed for comfortable, modern living.

Introducing Te Whata Tuarima, a thoughtfully designed new residential community in Christchurch's thriving Prestons/Redwood area, offering modern living in a convenient and connected location. Located just off Prestons Road, this subdivision combines the best of suburban calm with easy access to schools, parks, shops, and major arterial routes that connect you effortlessly to Christchurch City and beyond.

more features.

- + Digital Key Entry
- + Fully Landscaped
- + Samsung Appliances
- + Stone Benchtop
- + Tiled Shower
- + Walk-in Pantry
- + Walk-in Wardrobe






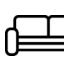

A Turn Key home is an all-inclusive package that only requires 10% deposit.

bringing you more

03 354 0166

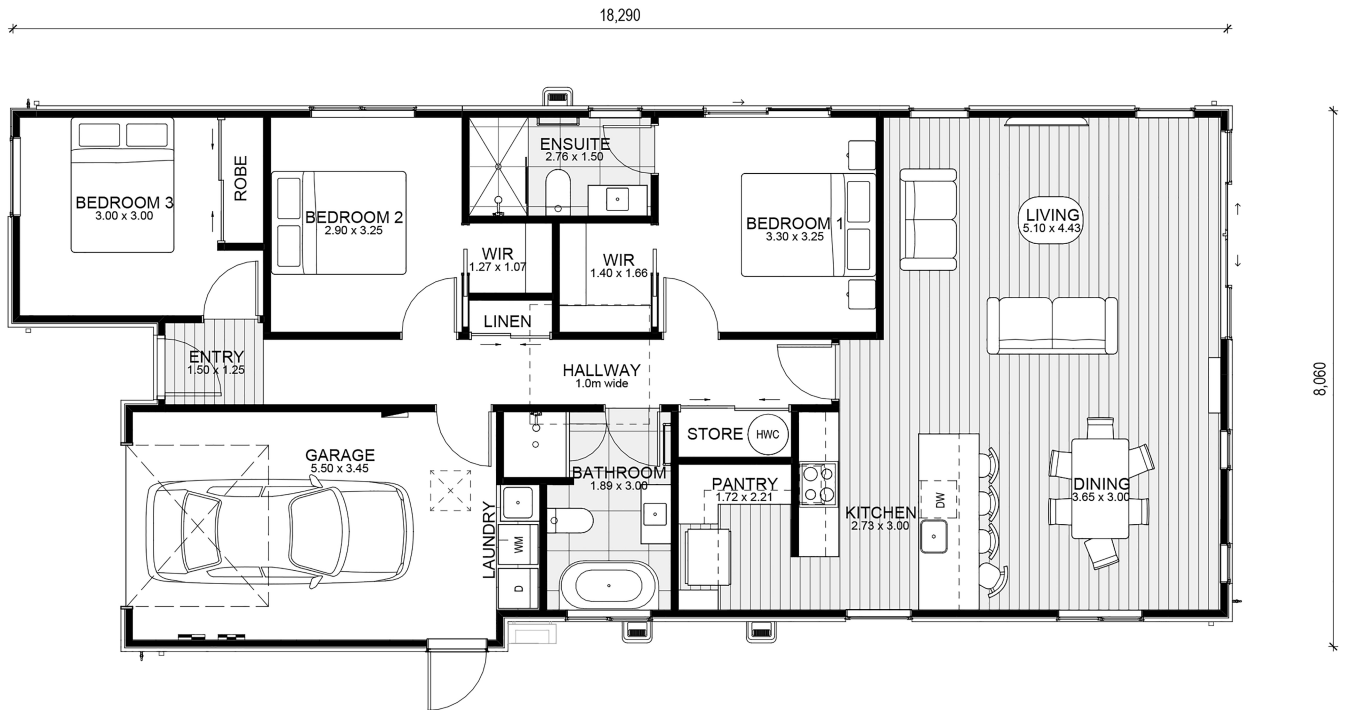
mikegreerhomes.co.nz

Te Whata Tuarima Lot 14 Te Whata Tuarima

dwelling size	section size	3	2	2	1	1
137 m ²	321 m ²					

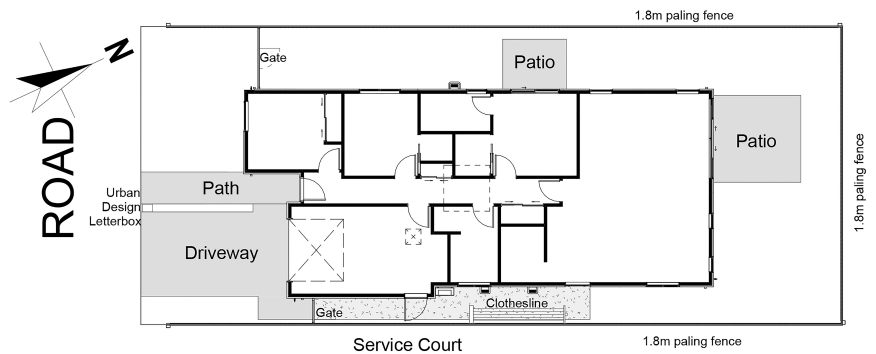


CT8527



After Sales Care

At Mike Greer Homes we are committed to making the build journey as stress-free as possible. Our After Sales Care programme addresses any maintenance issues and ensures that any remedial work is undertaken once it is logged and approved.



Disclaimer. While every reasonable effort has been made by Mike Greer Homes to ensure the information correctly illustrates the dwelling and section, this material may only be used by the Purchaser for illustrative and guidance purposes. Mike Greer Homes accepts no responsibility for any differences, errors or omissions which may become apparent during or on completion of the dwelling.