

\$799,000

 **mikegreerhomes**

Redwood

Lot 13 Te Whata Tuarima



Artist Impression Only

for sale

dwelling size | section size
135 m² | 321 m²

**homes
for
sale**

Set on a fully landscaped, easy-care section, this home offers three double bedrooms, including a master with ensuite, plus a family bathroom. The open plan kitchen, dining, and living area flows seamlessly outdoors, with an internal access single garage and quality finishes throughout.

Introducing Te Whata Tuarima, a thoughtfully designed new residential community in Christchurch's thriving Prestons/Redwood area, offering modern living in a convenient and connected location. Located just off Prestons Road, this subdivision combines the best of suburban calm with easy access to schools, parks, shops, and major arterial routes that connect you effortlessly to Christchurch City and beyond.

more features.

- ⊕ Digital Key Entry
- ⊕ Fully Landscaped
- ⊕ Samsung Appliances
- ⊕ Stone Benchtop
- ⊕ Tiled Shower
- ⊕ Walk-in Wardrobe



A Turn Key home is an all-inclusive package that only requires 10% deposit.

bringing you more

03 354 0166

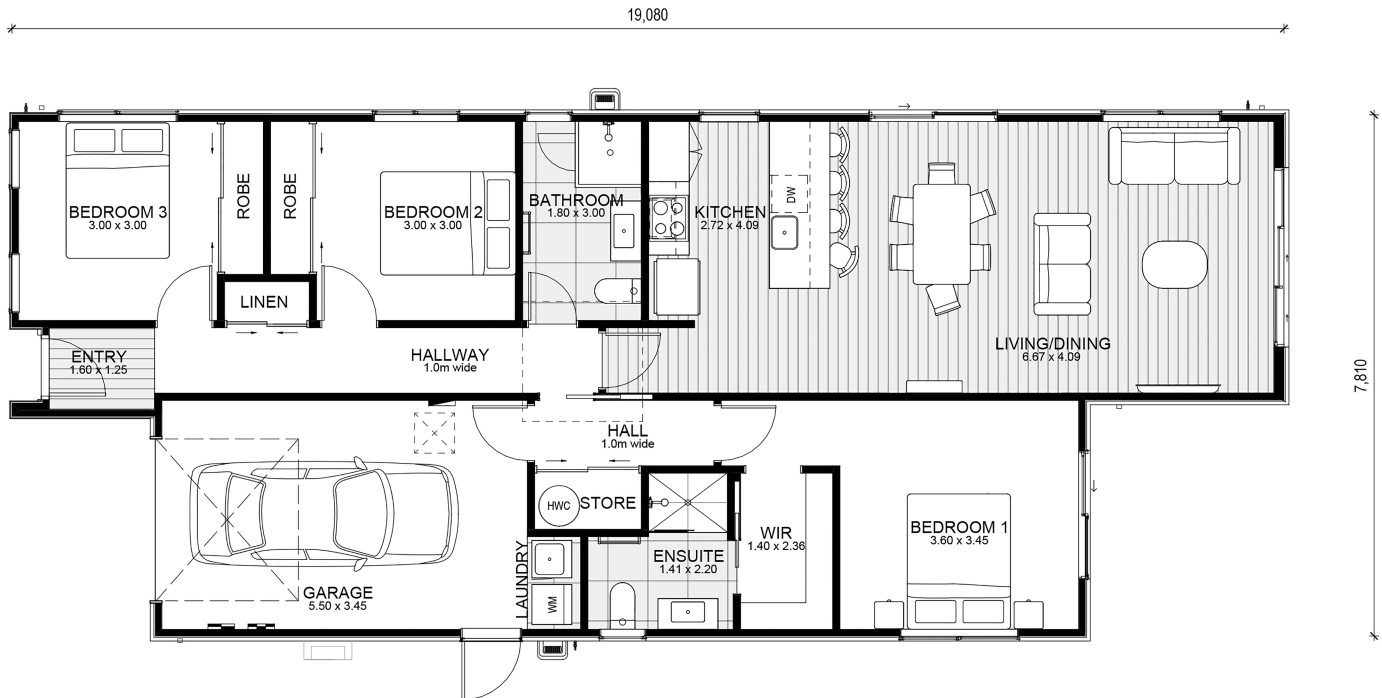
mikegreerhomes.co.nz

Te Whata Tuarima Lot 13 Te Whata Tuarima

| | | | | | | |
|--------------------|--------------------|---|---|---|---|---|
| dwelling size | section size | 3 | 2 | 2 | 1 | 1 |
| 135 m ² | 321 m ² | | | | | |

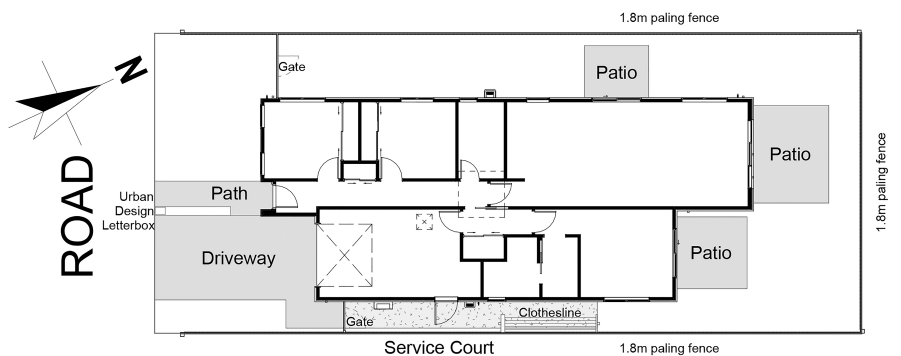


CT8526



After Sales Care

At Mike Greer Homes we are committed to making the build journey as stress-free as possible. Our After Sales Care programme addresses any maintenance issues and ensures that any remedial work is undertaken once it is logged and approved.



Disclaimer. While every reasonable effort has been made by Mike Greer Homes to ensure the information correctly illustrates the dwelling and section, this material may only be used by the Purchaser for illustrative and guidance purposes. Mike Greer Homes accepts no responsibility for any differences, errors or omissions which may become apparent during or on completion of the dwelling.